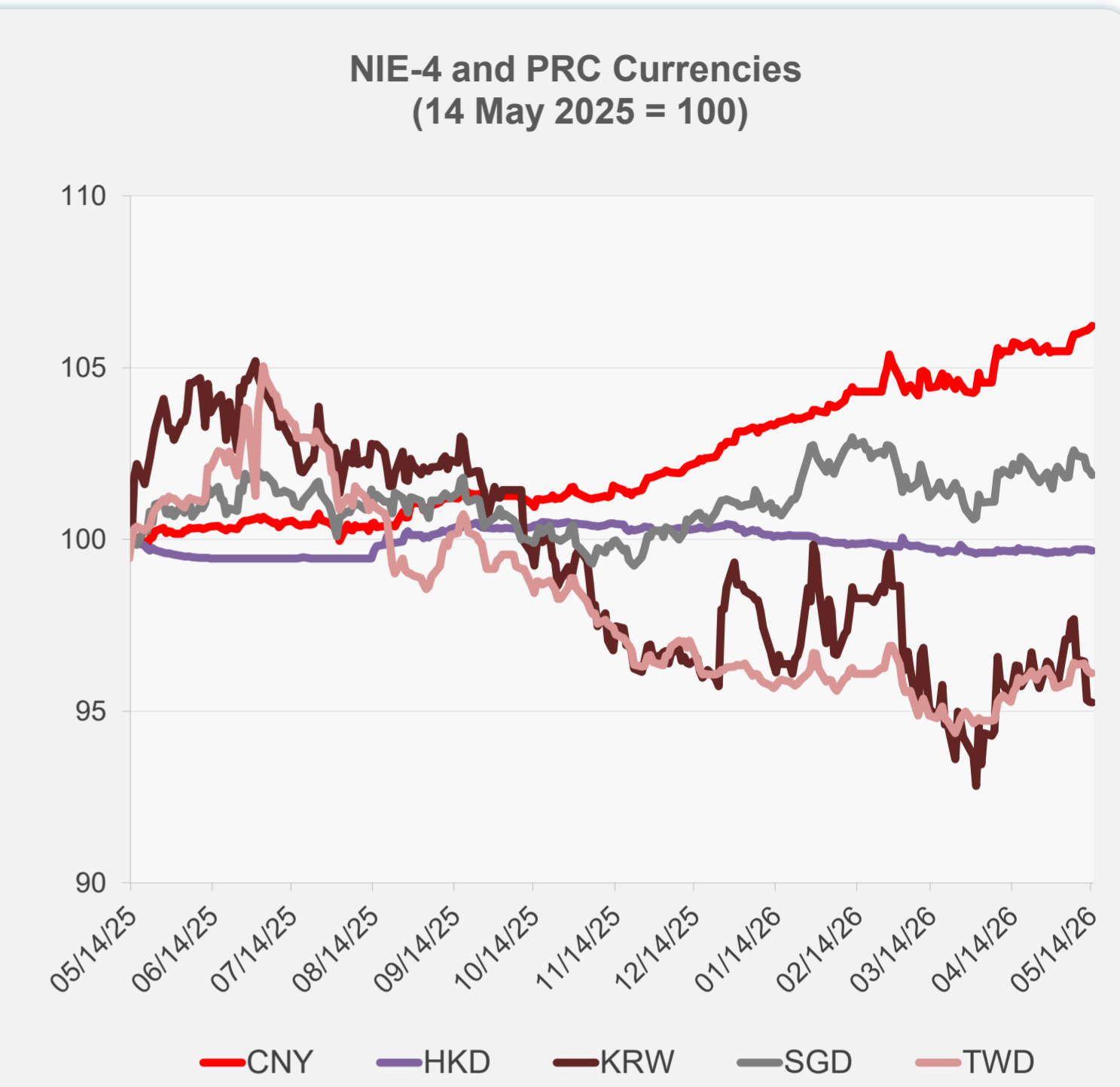
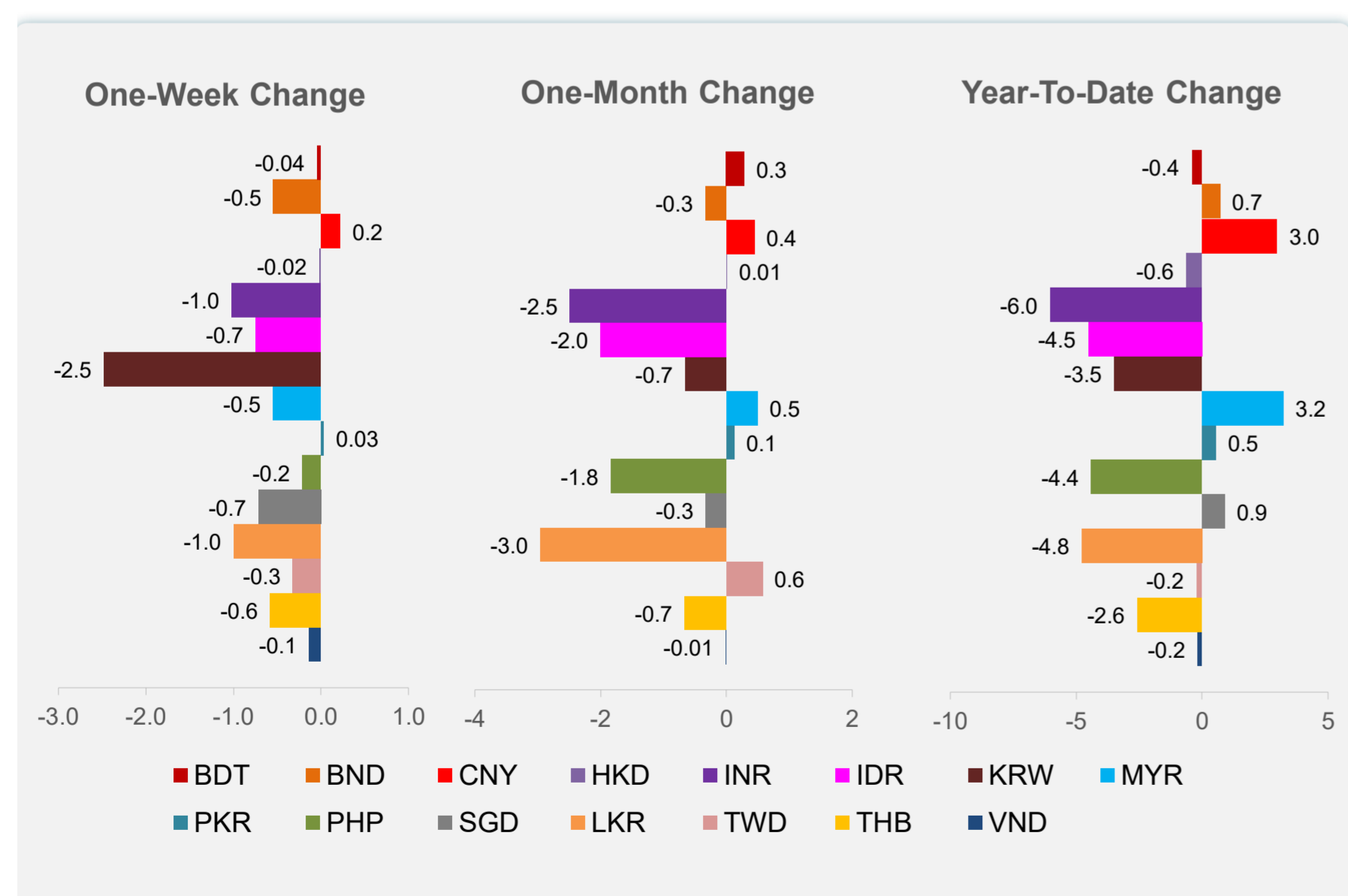
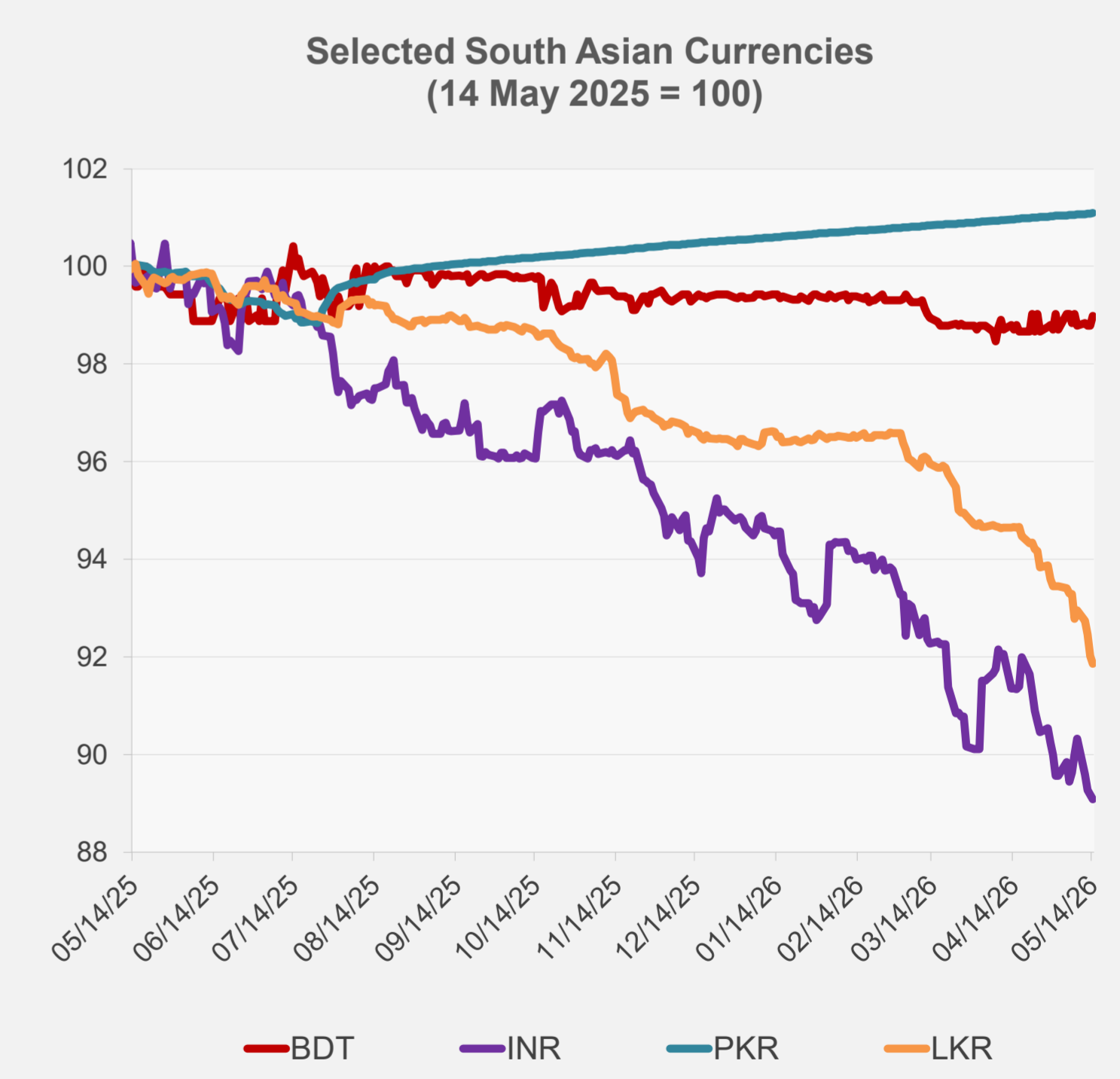
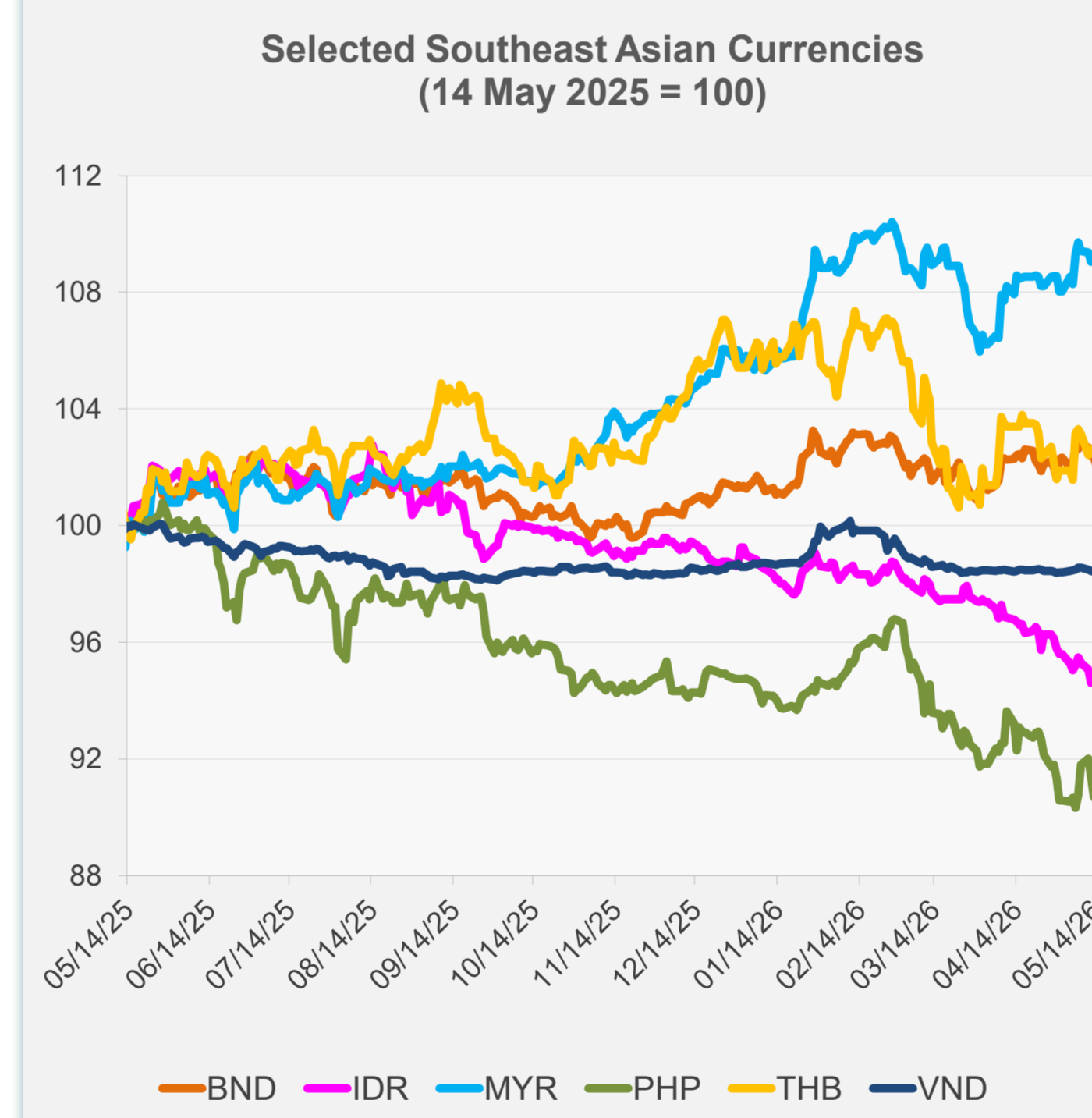


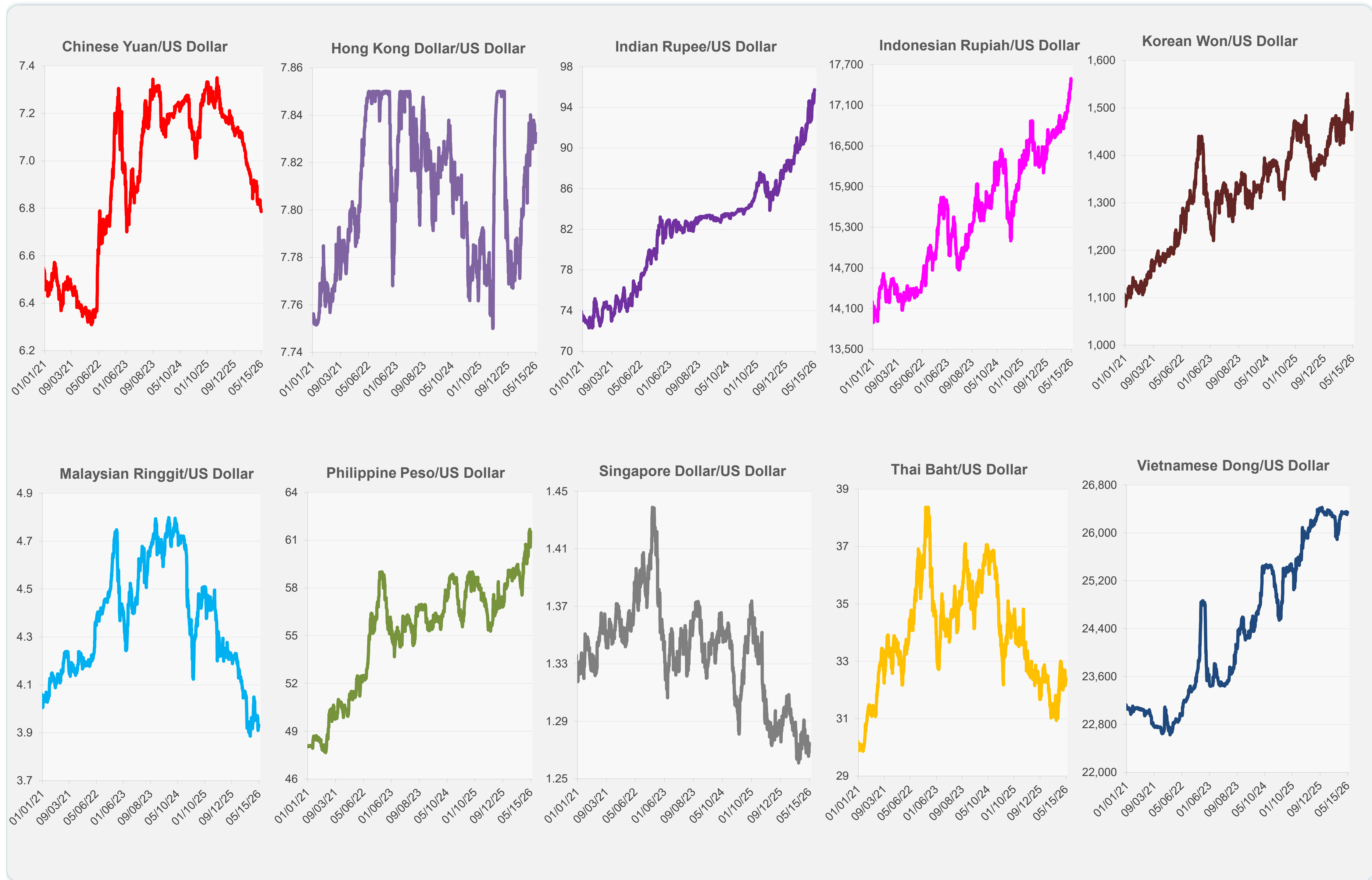
	Latest Closing	% change from Previous Day	% change from 01-Jan-26
Euro	0.86	-0.24	-0.55
Japanese yen (JPY)	157.93	-0.05	-1.23
Bangladeshi taka (BDT)	122.75	0.20	-0.41
Brunei dollar (BND)	1.28	-0.26	0.71
Chinese yuan (CNY)	6.79	0.06	2.97
Hong Kong dollar (HKD)	7.83	-0.02	-0.62
Indian rupee (INR)	95.75	-0.10	-6.03
Indonesian rupiah (IDR)	17,465.00	0.00	-4.52
Korean won (KRW)	1,491.00	-0.03	-3.49
Malaysian ringgit (MYR)	3.93	-0.03	3.22
Pakistan rupee (PKR)	278.60	0.01	0.54
Philippine peso (PHP)	61.51	-0.15	-4.39
Singapore dollar (SGD)	1.27	-0.14	0.89
Sri Lanka rupee (LKR)	325.13	-0.18	-4.78
Taipei,China NT dollar (TWD)	31.51	-0.01	-0.23
Thai baht (THB)	32.34	0.04	-2.57
Vietnamese dong (VND)	26,345.00	0.02	-0.17



NIE = Newly Industrialized Economies



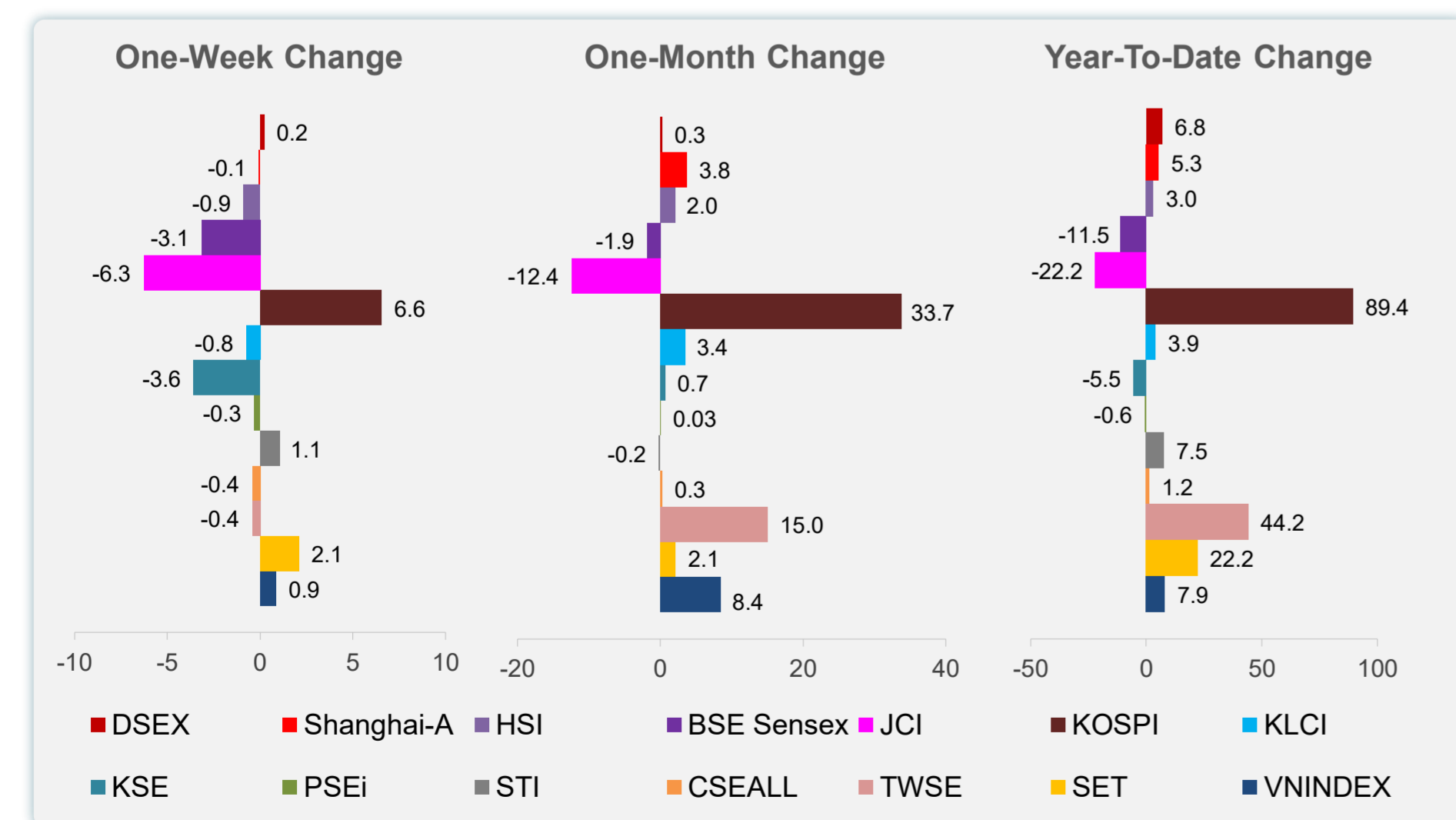
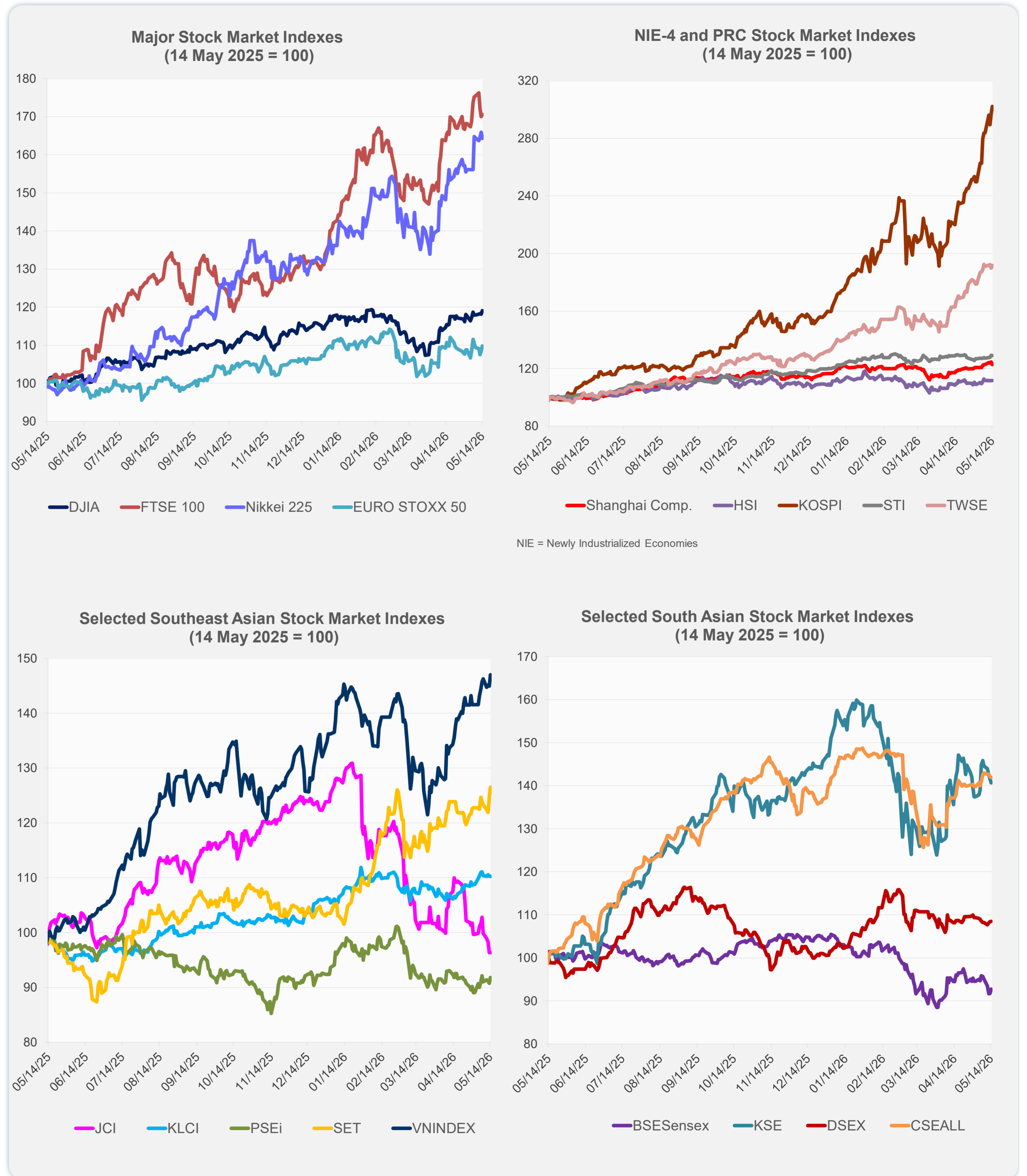
Note: Negative/Decreasing values indicate depreciation of local currency, and positive/increasing values indicate appreciation.
Source: ADB calculations using data from Bloomberg and Haver Analytics.



Source: Haver Analytics.

Daily Market Watch
STOCK INDEXES

	Latest Closing	% change from Previous Day	% change from 01-Jan-26
US Dow Jones Ind Avg	50,063.46	0.75	4.16
US NASDAQ	26,635.22	0.88	14.60
US S&P 500	7,501.24	0.77	9.58
UK FTSE 100	14,644.70	0.32	30.04
EURO STOXX 50	5,934.96	1.26	2.48
Japan NIKKEI 225	62,654.05	-0.98	24.46
Bangladesh DSEX	5,245.22	0.03	6.81
PRC Shanghai Comp.	4,177.92	-1.52	5.27
Hong Kong, China HSI	26,389.04	0.00	2.96
India BSE Sensex	75,398.72	1.06	-11.49
Indonesia JCI	6,723.32	0.00	-22.25
Korea, Rep. of KOSPI	7,981.41	1.75	89.39
Malaysia KLCI	1,745.58	-0.04	3.90
Pakistan KSE 100	166,725.80	-0.66	-5.52
Philippines PSEi	6,015.03	1.15	-0.63
Singapore STI	4,995.94	-0.16	7.53
Sri Lanka CSEALL	22,899.53	-0.09	1.22
Taipei,China TWSE	41,751.75	0.91	44.15
Thailand SET	1,539.12	1.44	22.18
Viet Nam VNINDEX	1,925.46	1.43	7.90



Sources: ADB calculations using data from Bloomberg and CEIC Data Company.

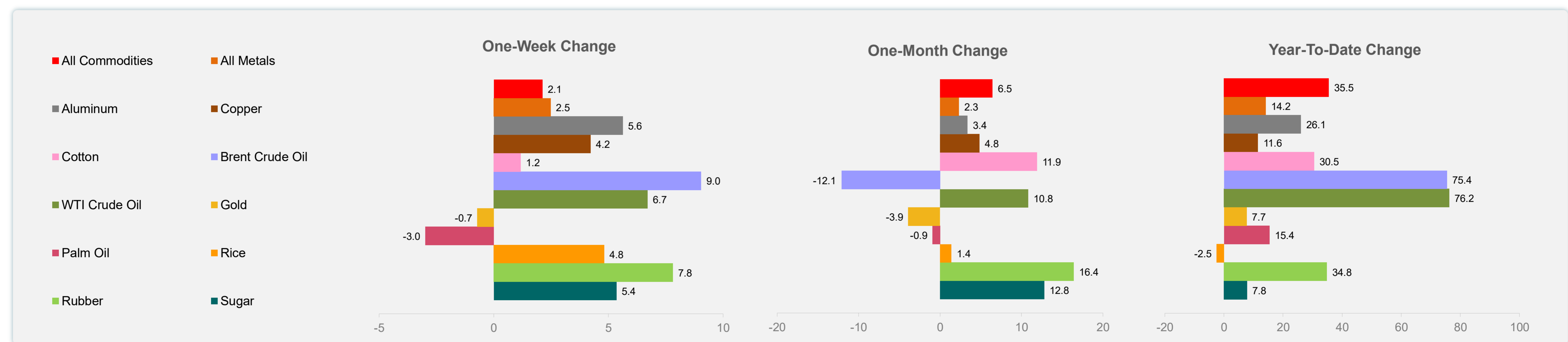
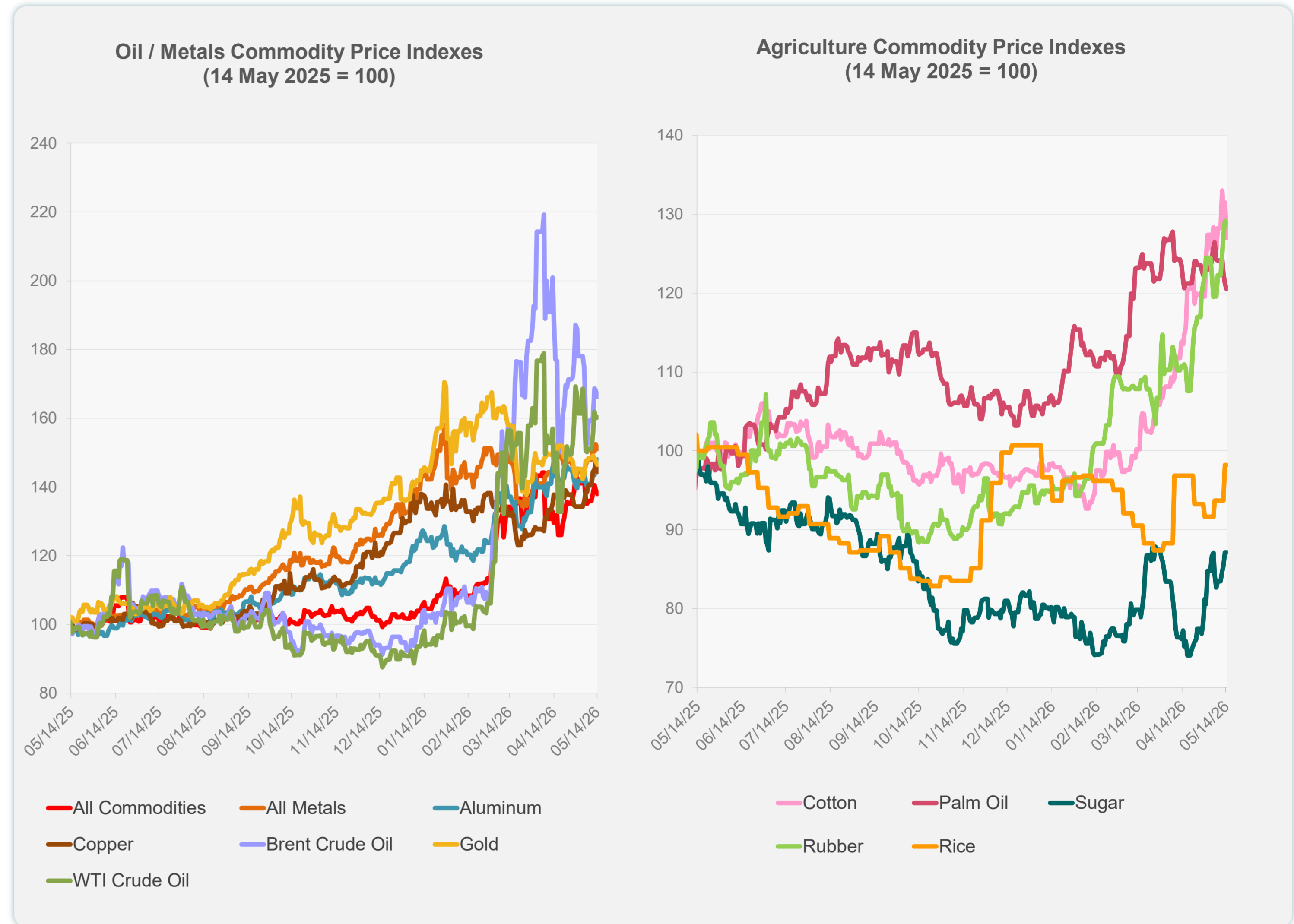


Sources: ADB calculations using data from Bloomberg and CEIC Data Company.

Daily Market Watch
COMMODITY PRICES

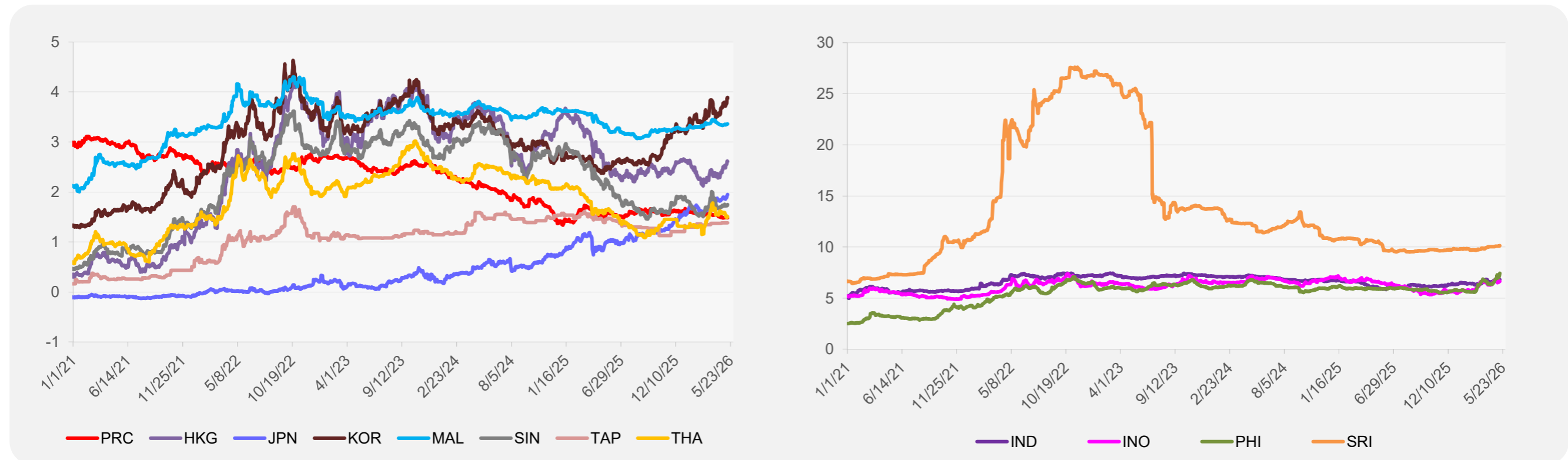
	Unit	Latest Closing	% change from Previous Day	% change from 01-Jan-26
S&P All Commodities	US\$	743.17	-0.88	35.49
S&P All Metals	US\$	506.56	-0.94	14.15
Aluminum	US\$/metric ton	3,741.23	0.34	26.05
Copper	US\$/metric ton	13,894.74	-1.52	11.57
Cotton	US cents/lb	80.94	-3.42	30.51
Brent Crude Oil	US\$/barrel	109.56	-1.11	75.44
WTI Crude Oil	US\$/barrel	101.17	0.15	76.19
Gold	US\$/troy oz	4,651.98	-0.78	7.70
Palm Oil	US\$/metric tonne	1,117.91	-0.58	15.41
Rice ¹	US\$/metric ton	435.00	0.00	-2.47
Rubber ²	US\$/kg	289.90	-0.17	34.84
Sugar	US cents/lb	15.95	0.00	7.84

¹ Latest closing price from 13 May 2026.
² Singapore Exchange, Ribbed Smoked Sheet Rubber.

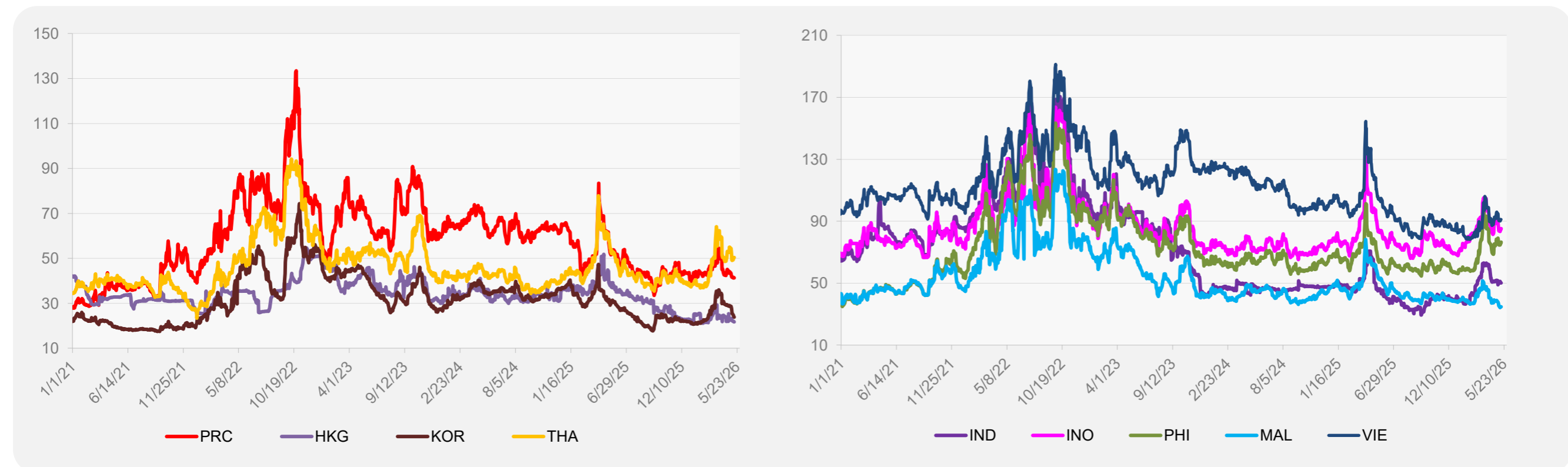


Source: ADB calculations using data from Bloomberg.

5-YEAR LOCAL CURRENCY GOVERNMENT BOND YIELDS (%)



5-YEAR CREDIT DEFAULT SWAP¹



¹ In USD and based on sovereign bonds.
Source: ADB calculations using data from Bloomberg.